

NTX Mesh Partnership Proposal

Equipment, Installation, and Helping the Mesh





What is NTX Mesh?

Community

NTX Mesh is a community group building a mesh network consisting of license-free solar-powered radios in the North Texas area. This group is run by volunteer contributions.

The Mesh

The Mesh network acts like a metroplex-wide text messaging system, allowing people to communicate publicly or privately with anyone on the network. This is a free and open-source service not tied to existing infrastructure.

The Mission

NTX Mesh aims to connect families, emergency services, and local communities through reliable and decentralized mesh radios. Being off-grid, it works during power outages and without a cellular connection.



Mesh Deployment Roadmap

Spread Awareness

Mesh is for Everyone

The NTX Mesh is accessible to anyone with an off-the-shelf radio. It's like walkie talkies, but for short text messages. Great for keeping up with family.

Install Equipment

Nodes in High Places

Radios placed in strategic locations can expand the reach of a single person's message. These nodes relay messages from one user to another.

Link the Metroplex

Community Resilience

Building out the mesh extends communication between neighbors, towns, and beyond. At scale, a state-wide network of mesh radios is possible.



How you can Help!

Be a part of the
Mesh Infrastructure Backbone
by hosting an NTX Mesh
radio node on your property.

When you host a node, the Mesh can:

- Reach More People
- Cover More Area
- Be More Resilient

Every additional node adds reliability and redundancy to the Mesh network, and allows more people to access this free-to-use service.

Equipment Installation





An NTX Mesh community member will work with you to determine the location of the node(s) and mounting solutions.

The node is usually mounted at the highest point possible. Magnets and clamps mean no damage to your property.

At any time, you may request the node be removed or relocated. Please give enough time to schedule this work.

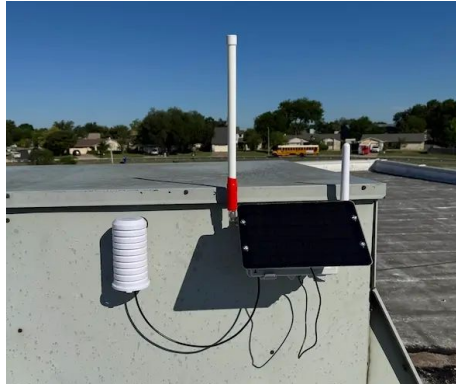


If needed, a custom radio will be built to fit your property's mounting requirements and location.

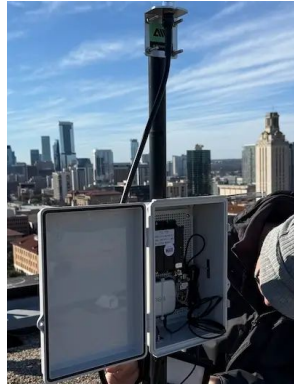
Every 6 months, or as needed, a community member will request access to the node to inspect the hardware and update the software.



Equipment Installation Examples



Magnetically mounted
on a roof A/C unit



Clamped to a
satellite dish mast



Magnetically mounted to
advertising signage



Clamped to an
access ladder



Quick Information for Property Owners

Equipment Specs

The Mesh node radios are self-sufficient. They do not require power or internet connections.

The radios are smaller than a lunchbox, and transmit less power than a cell phone. They do not interfere with your other wireless equipment.

Maintenance Needs

Mesh nodes will require periodic maintenance to check on the health of the hardware and update the software.

Most maintenance can be done remotely, but there are rare times where physical access is needed to repair a node.

Permits and Liability

No permit is needed for non-commercial installations of low-power ISM-band radios.

The building owner carries the liability, though an incident is not expected to be material.

<https://ntxmesh.com/partners/property-owner-faq/>



NTX Mesh Thanks You!

Expanding the Mesh is a community-driven effort.

The group is run by volunteers for the benefit of everyone.

Thank you for considering becoming an NTX Mesh Partner by hosting a node on your property.

Your time and logistic contribution to the Mesh will help grow this free-to-use, open-source, decentralized, resilient, and self-sustaining family, community, and emergency messaging service.
